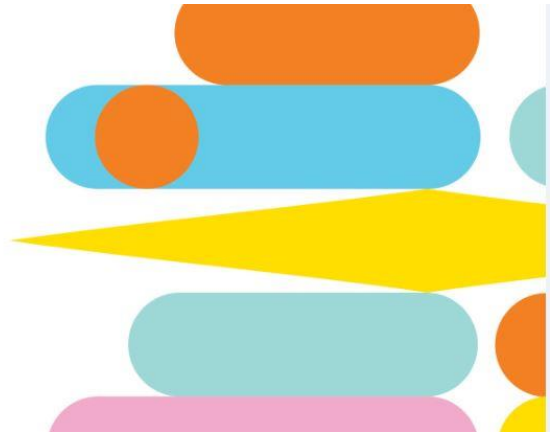


BURLINGTON CULTURE DAYS



Culture Days in #BurlON – Scavenger Hunt

Celebrate Culture Days 2020 in #BurlON with our scavenger hunt. Our self-guided scavenger hunt covers heritage, nature, and attractions throughout Burlington, so you can complete at your own pace.

50 Years of Tourism Burlington

This year is our 50th anniversary and while we are currently located at 414 Locust St., we were once found in Spencer Smith Park. What restaurant is currently there overlooking the lake?

Taste of Burlington

A highlight of the Burlington culinary world, the Taste of Burlington is a much-anticipated prix fixe dining event. This year, restaurants are offering both in-person and takeout meals. How many restaurants are participating this year?

A Place to Stay

Now the Queen's Head Pub, this popular restaurant was once the Queen's Hotel, and before that Zimmerman House. Take a photo outside the historic building, and see if you can find any other locations downtown that was once a hotel (Hint: look for a Hotel Raymond sign!)

Downtown Sounds

Visit Spencer Smith Park and stand in the centre of the compass, looking towards Lake Ontario. What happens when you speak?

Home in #BurlION

Downtown Burlington is home to a newly renovated museum that was once the home of Burlington's founder. Who is he? Take a photo outside his house, and maybe explore the exhibitions while you're there!

Art in Aldershot

Representing the changes in Aldershot Village from the past to now, this public art piece was installed after collaboration with community members, businesses, and the City of Burlington. Take a photo of it!!

Collaborative Culture

This mural was created with the help of students and is located outside one of Burlington's high schools. Where is it?

Founding of Burlington

Outside of City Hall is a plaque representing the founding of Burlington. What year did Burlington officially become a town?

Blooming Burlington

Driving down Upper Middle you can see public art by Alex Pentek representing the natural diversity of Burlington through orchids. How many orchid sculptures are there?

Escape to the Escarpment

Visit one of the Conservation Halton parks to get a view of the entire city from above (reservations required). Hike one of the trails and look out to the escarpment. Can you see your house from there?

Jewel in the Crown

Once owned by Laura Secord, this property is now home to a historic mansion and wide park overlooking the lake and is a perfect venue for events and photography. Take a photo during your visit to the park.

Sisters of Burlington (Part One)

This city has been one of our sister cities since 1989. To celebrate, we were given the Friendship Clock, found outside of City Hall. What city am I?

Sisters of Burlington (Part Two)

This city has been Burlington's Sister since 2005 and is represented in our city by both a park in the downtown as well as a furniture sculpture in Spencer Smith Park. What city am I?

Eat Local!

Burlington is home to many different delicious restaurants. Get the most of the last warm days of the year and visit a patio or order food to go! Visit the Taste of Burlington website for information on restaurants.

Lights at the Lake

Now that we're in fall it's getting darker a lot earlier, but that means the Brant St. Pier lights are turned on a lot sooner! Visit the Pier at night to see what colours are shining the night you visit!

The Lake from St Luke's

Looking south from St Luke's Church gives you a beautiful view of the lake. Find the plaque to learn about the significance of this spot!

Fun Figures

Standing tall outside the Art Gallery of Burlington is a large sculpture that has looked toward the lake since 1978. What is its name?

Freeman Station

Burlington is a central location for many of both today and the past. Freeman Station was once essential for travelling to and from Burlington. Take a picture outside the fully restored Grand Trunk Railway station.

Pics of the Past

Head down Plains Road and you will see signs of old Burlington. Pictured on seven of the electrical boxes are images of the history of Burlington. See how many you can find and what they represent.

Rainbow Connection

Take a walk across the new Rainbow Crosswalk which recognizes Pride and inclusivity and is located in Downtown Burlington